

Beaver Creek– Sept 2025



Discover Define Develop

**DISCOVERING MAJOR GOLD PROJECTS IN
SOUTH AMERICA**

[TSX.V and AIM: OMI]

Disclaimer



This document has been issued by Orosur Mining Inc. (the "Company"). This document does not constitute or form part of any offer or invitation to sell or issue, or any solicitation of any offer to purchase or subscribe for, any securities of the Company, nor shall any part of it nor the fact of its distribution form part of or be relied on in connection with any contract or investment decision relating thereto, nor does it constitute a recommendation regarding the securities of the Company. In particular, this document and the information contained herein does not constitute an offer of securities for sale in the United States.

This document is being supplied solely for information. The information in this document has been provided by the Company or obtained from publicly available sources. No reliance may be placed for any purposes whatsoever on the information or opinions contained in this document or on its completeness. No representation or warranty, express or implied, is given by or on behalf of the Company or any of the Company's directors, officers or employees or any other person as to the accuracy or completeness of the information or opinions contained in this document and no liability whatsoever is accepted by the Company or any of the Company's members, directors, officers or employees nor any other person for any loss howsoever arising, directly or indirectly, from any use of such information or opinions or otherwise arising in connection therewith. Nothing in this document or in the documents referred to in it should be considered as a profit forecast. Past performance of the Company or its shares cannot be relied on as a guide to future performance.

All statements, other than statements of historical fact, contained in this presentation constitute "forward looking statements" within the meaning of applicable securities laws, including but not limited to the "safe harbour" provisions of the United States Private Securities Litigation Reform Act of 1995 and are based on expectations estimates and projections as of the date of this presentation. Forward-looking statements include, without limitation, the exploration plans in Colombia, Argentina and Nigeria; the ability for the Company's wholly owned subsidiary Loryser to conclude its creditors agreement (Creditors Agreement) successfully in Uruguay as well as continuation of the business of the Company on a going concern and other events or conditions that may occur in the future. The Company's continuance as a going concern is dependent upon its ability to obtain adequate financing and to reach a satisfactory conclusion to the Creditors Agreement in Uruguay. These material uncertainties may cast significant doubt upon the Company's ability to realize its assets and discharge its liabilities in the normal course of business and accordingly the appropriateness of the use of accounting principles applicable to a going concern. There can be no assurance that such statements will prove to be accurate. Actual results and future events could differ materially from those anticipated in such forward- looking statements. Such statements are subject to significant risks and uncertainties including, but not limited, those as described in Section "Risks Factors" of the Company's most recent Management's Discussion and Analysis. The Company disclaims any intention or obligation to update or revise any forward-looking statements whether as a result of new information, future events and such forward-looking statements, except to the extent required by applicable law.

Qualified Person's Statement

The information in this presentation was compiled, reviewed and verified by Mr. Brad George, BSc hons (Geology and Geophysics), MBA, Member of the Australian Institute of Geoscientists (MAIG), CEO of Orosur Mining Ltd and a qualified person as defined by National Instrument 43-101.

For further details regarding any of Orosur's projects, please refer to the technical reports available under Orosur company profile, or on SEDAR at www.sedar.com

This document is provided for general information only and does not purport to contain all the information that may be required to evaluate the Company or its securities. The information in this document is provided as at the date of this document (unless stated otherwise) and is subject to updating, completion, revision and is not independently verified. No reliance may be placed for any purpose whatever on the information or opinions contained or expressed in this document or on the accuracy, completeness or fairness of such information and opinions.

Capital Structure



Capital Structure and Key Metrics (4th Sept 2025)

| | |
|--------------------------------------|-------------|
| Basic Shares Outstanding | 316,823,476 |
| Options/RSU/DSU | 18,205,000 |
| Warrants | 31,509,822 |
| Fully Diluted Shares Outstanding | 366,538,298 |
| Market Cap 4 th Sept 2025 | CAD\$100m |
| Cash on Hand | cUS\$3.5m |



Key gold belts



Large land holdings in two key gold belts

High grade discoveries-moving to resource.

Untouched green fields potential

Investment thesis



The right commodity at the right time

- Gold
- High grade
- At surface

The right deal

- Owned 100% or JV pathway to 100%
- Huge land packages

Focus on Cost

- Low cost of discovery
- Low development cost
- Low AISC

The right place

- Mid Cauca belt - Colombia
- Deseado Massif- Argentina

Parallel Streams

- Two prospects near MRE
- Near term production
- Grass roots potential

Experienced Team



Board of Directors

Louis Castro, Executive Chairman

A former chartered accountant and investment banker with more than 30 years' City and industry experience, with emphasis on mining and oil and gas.

Brad George, CEO, Director

A geoscientist by profession, with over 35 years' experience in global mineral exploration, development and financing.

Nick Von Schirnding

Over 25 years' experience in executive roles within the mining and natural resources sectors. Nick is currently the Executive Chairman of Arc Minerals Plc and non-executive director of Jangada Mines Plc.

Thomas Masney

Based in Toronto, has in the past been CFO of a number of TSX and AIM companies. A CPA, he has worked internationally for companies in the mining space and other sectors.

Management

Joaquin Sarocca – VP legal and commercial

With a Master of Laws from Queen Mary University of London, Joaquin has over 15 years of international legal experience in the UK and Uruguay.

Liliana Munoz – Colombia country manager

A resident of Medellin, Liliana has managed Colombian administration for over 10 years. She is highly skilled in all aspects of the Colombian commercial and legal business environment.

Jeronimo Janez – Principal Geologist

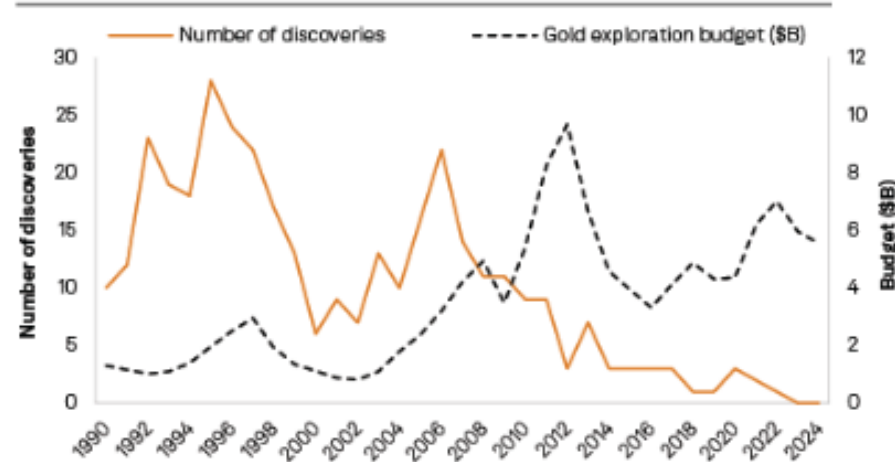
Based in Argentina. Jeronimo has extensive experience in mineral exploration, development and production, having worked for Orosur since 2013

Ernesto Slavutsky- Principal Geologist

Over 15 years of Latin American experience, across varied terranes. Ernesto has a postgraduate degree in geostatistics as applied to the estimated and evaluation of ore deposits.

Sectoral Challenge

The number of new discoveries has been trending lower despite higher budgets, as explorers tend to focus on extending known deposits instead of finding new ones.



Exploration success in decline, size of discoveries in decline. Spending more no longer works.

Cash costs, capital intensity and time to production all increasing



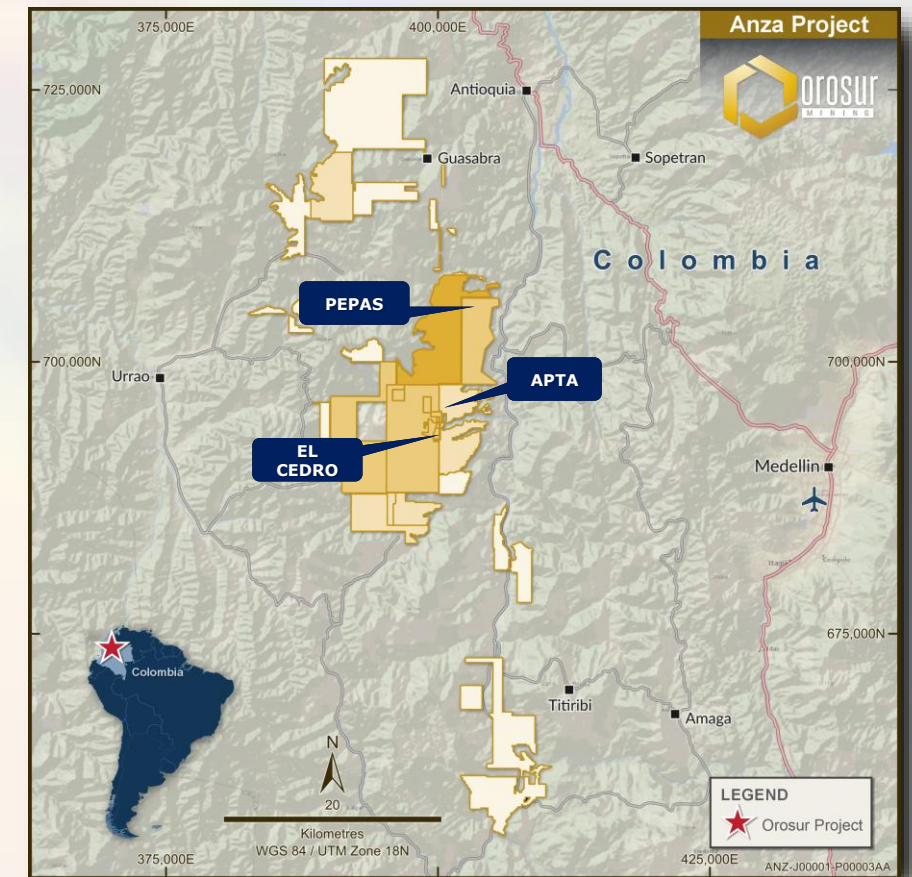
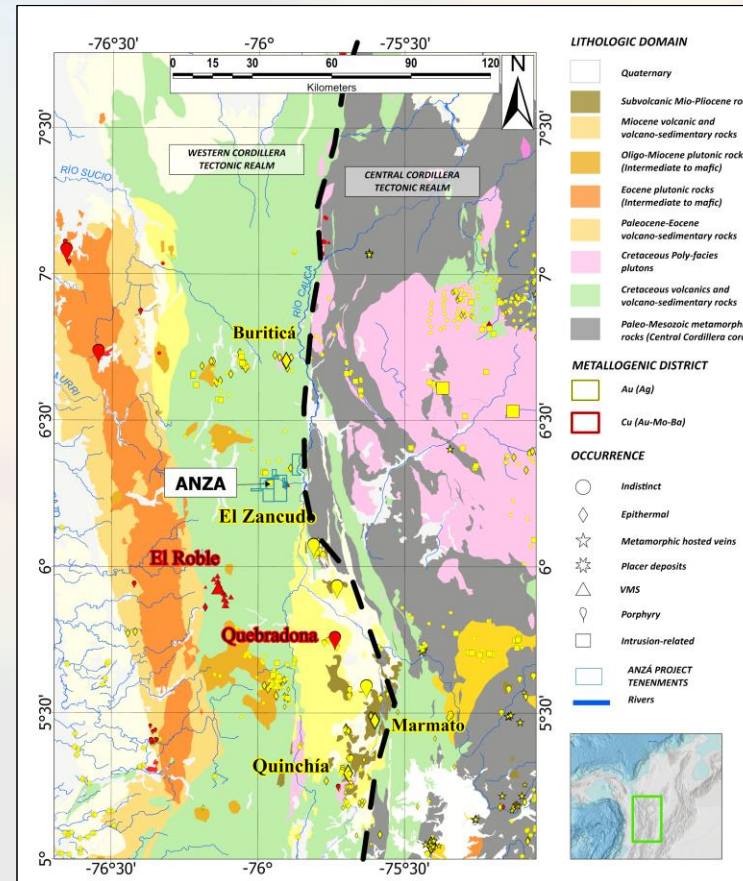
Anzá Project - Colombia



400km² in
prolific middle
Cauca belt.

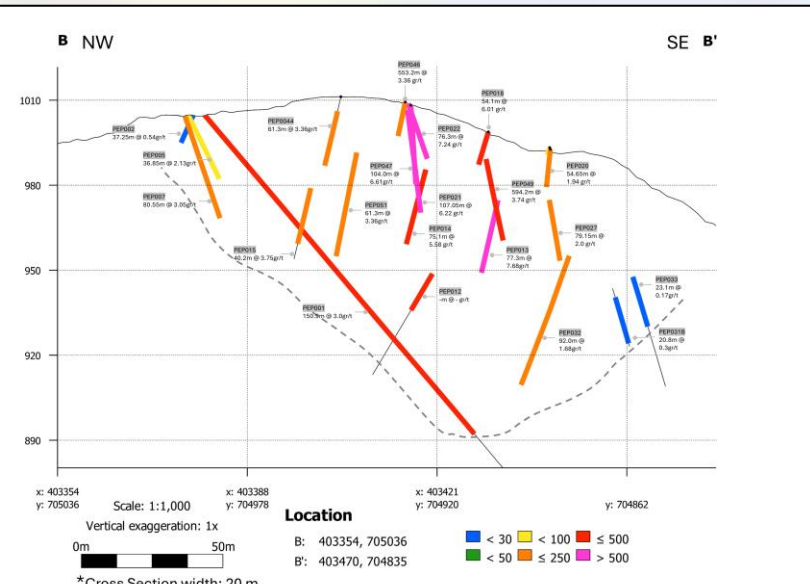
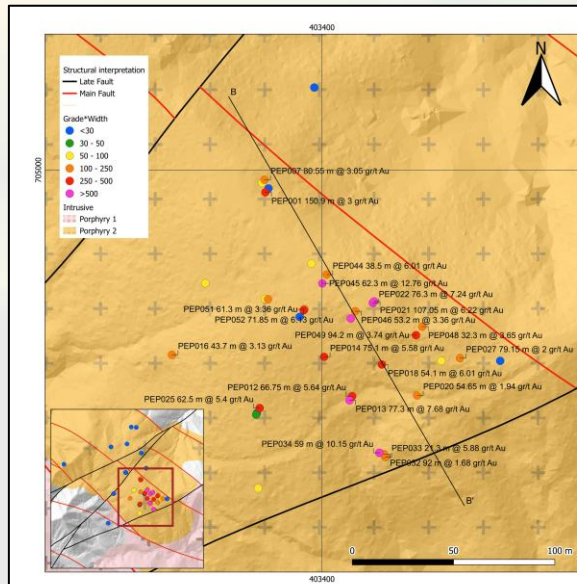
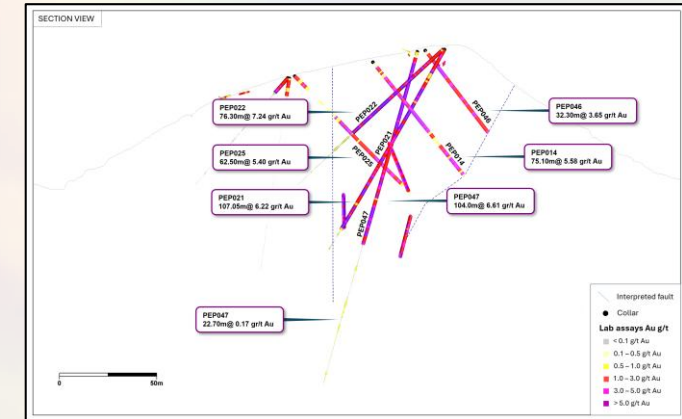
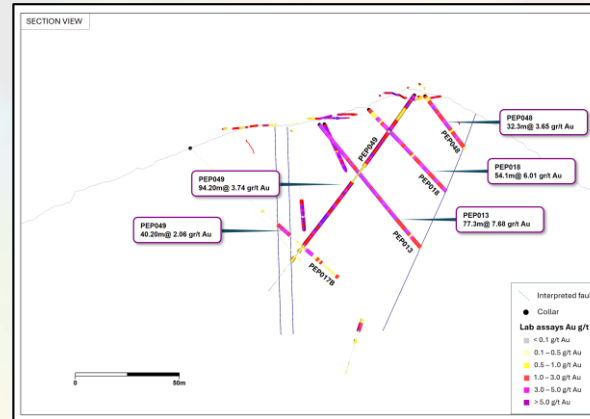
Three key
prospects –
Pepas, APTA,
El Cedro

100%
ownership



Pepas – high grade from surface

| Hole Number | From (m) | To (m) | Interval (m) | Grade Au (g/t) | grade x width gm |
|-------------|----------|--------|--------------|----------------|------------------|
| PEP001 | 0 | 150 | 150 | 3 | 450 |
| PEP005 | 0 | 36.85 | 36.85 | 2.13 | 78 |
| PEP007 | 0 | 80.3 | 80.3 | 3.05 | 245 |
| PEP012 | 0 | 66.75 | 66.75 | 5.64 | 376 |
| PEP013 | 0 | 77.3 | 77.3 | 7.68 | 594 |
| PEP014 | 0 | 75.1 | 75.1 | 5.58 | 419 |
| PEP015 | 23.5 | 63.7 | 40.2 | 3.75 | 151 |
| PEP016 | 61.6 | 105.3 | 43.7 | 3.13 | 137 |
| PEP017 | 56.1 | 96.3 | 40.2 | 2.06 | 83 |
| PEP018 | 0 | 54.1 | 54.1 | 6.01 | 325 |
| PEP019 | 0 | 44.3 | 44.3 | 1.63 | 72 |
| PEP020 | 0 | 54.65 | 54.65 | 1.94 | 106 |
| PEP021 | 0 | 107.1 | 107.05 | 6.22 | 666 |
| PEP022 | 0 | 76.3 | 76.3 | 7.24 | 552 |
| PEP023 | 0 | 15 | 15 | 1.7 | 26 |
| PEP024 | 9.24 | 15.6 | 6.35 | 1.99 | 13 |
| PEP025 | 16.5 | 79 | 62.5 | 5.4 | 338 |
| PEP026 | 43.6 | 72 | 28.4 | 2.52 | 72 |
| PEP027 | 1 | 80.15 | 79.15 | 2 | 158 |
| PEP028 | 29.5 | 60.85 | 31.35 | 1.61 | 50 |
| PEP032 | 0 | 92 | 92 | 1.68 | 155 |
| PEP033 | 0 | 21.3 | 21.3 | 5.88 | 125 |
| PEP034 | 36 | 95 | 59 | 10.15 | 599 |
| PEP035 | 0 | 11.4 | 11.4 | 2.71 | 31 |
| PEP041 | 34.4 | 66.1 | 31.75 | 2.01 | 64 |
| PEP044 | 5.8 | 44.3 | 38.5 | 6.01 | 231 |
| PEP045 | 9.5 | 71.8 | 62.3 | 12.76 | 795 |
| PEP046 | 0 | 53.2 | 53.2 | 3.36 | 179 |
| PEP047 | 0 | 104 | 104 | 6.61 | 687 |
| PEP048 | 0 | 32.3 | 32.3 | 3.65 | 118 |
| PEP049 | 0 | 94.2 | 94.2 | 3.74 | 352 |
| PEP050 | 0 | 34 | 34 | 2.33 | 79 |
| PEP051 | 11.2 | 72.5 | 61.3 | 3.36 | 206 |
| PEP052 | 9.4 | 81.25 | 71.85 | 6.13 | 440 |



Pepas – moving fast

48 holes drilled post transaction - 4500m



1300m more to get to MRE. Targeting December.



Metallurgical test work programs being developed



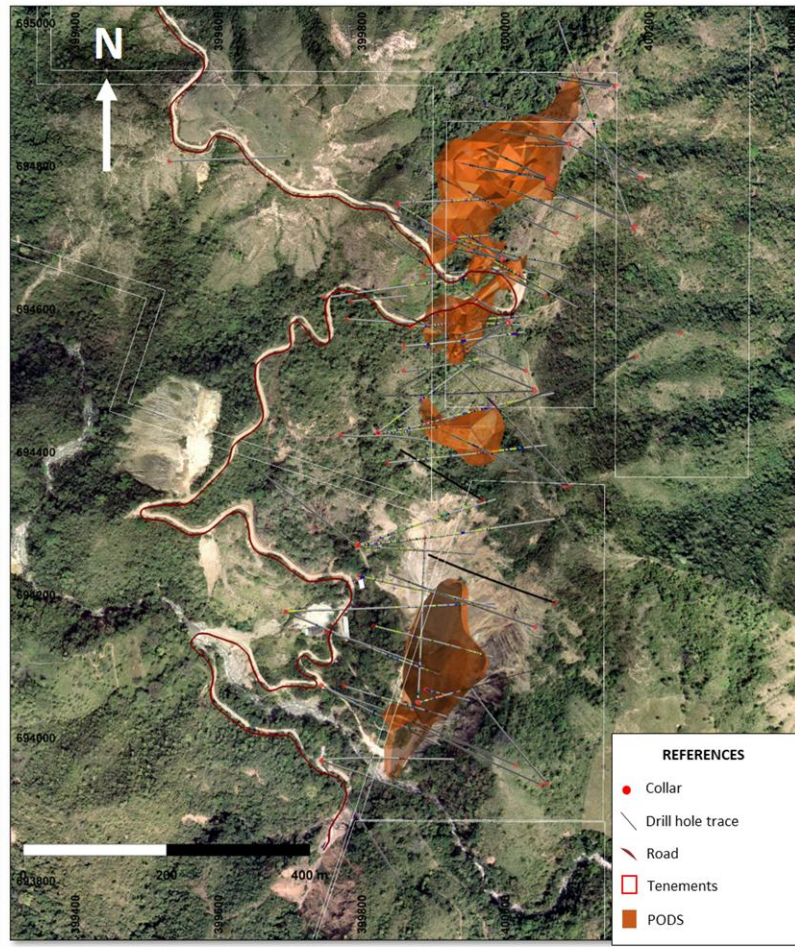
Roads, transport and logistics to be examined with view to third party processing

Why?

Pepas is unusual, what it is, where it is, when it is!

- High grade
- High gold price
- At surface
- Low strip
- Power to site
- Close to main highway
- Proximity to several third-party mills

APTA



38,000m of drilling

New geological model developed

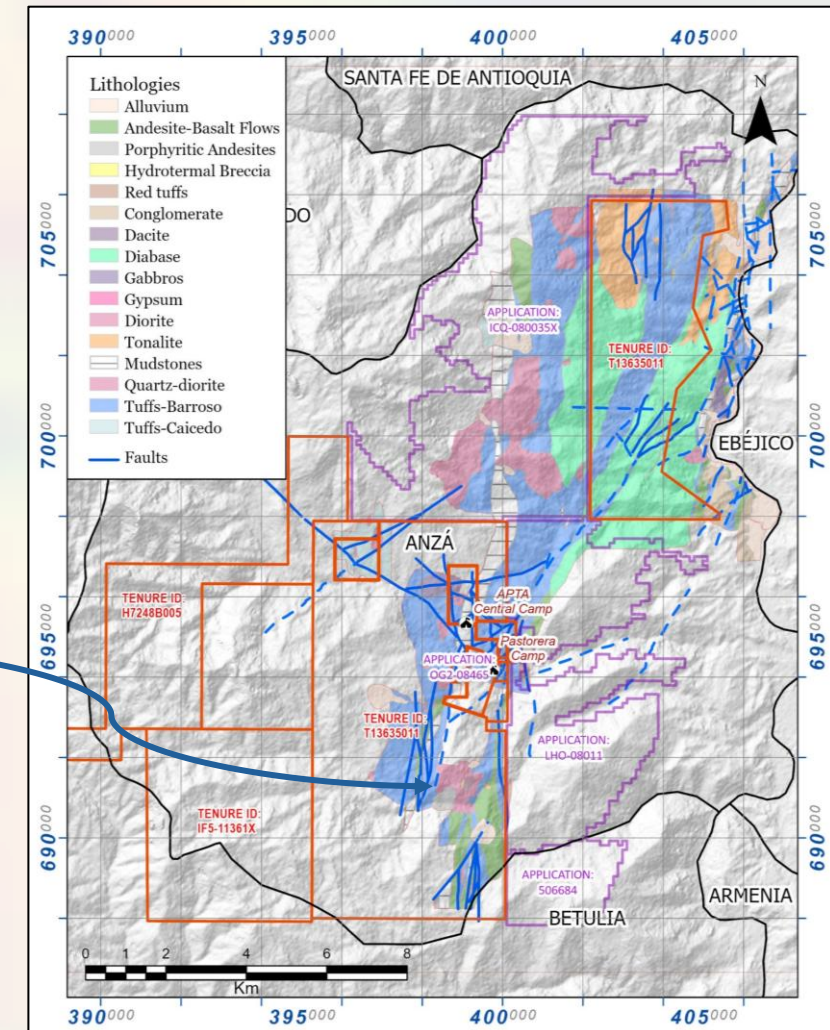
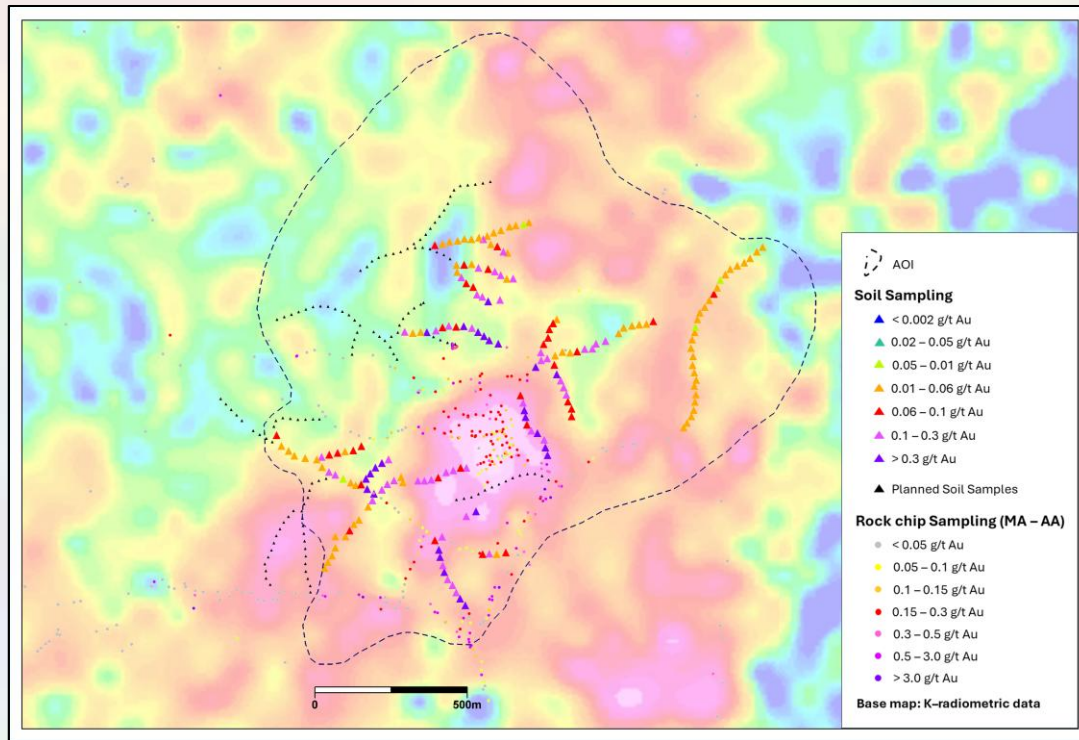
Drilling to confirm model and move to MRE

| Hole No | From (m) | To (m) | Interval (m) | Aug/t |
|---------|----------|--------|--------------|-------|
| MAP011 | 213 | 219 | 6 | 18.26 |
| MAP020 | 145 | 186 | 41 | 3.85 |
| MAP021 | 224 | 242 | 18 | 14.14 |
| MAP033 | 157 | 179 | 22 | 10.42 |
| MAP036 | 198 | 227 | 29 | 3.88 |
| MAP038 | 172 | 212 | 40 | 14.09 |
| MAP048 | 181 | 195 | 14 | 40.37 |
| MAP054 | 41 | 59 | 18 | 2.96 |
| | 97 | 110 | 13 | 4.36 |
| | 144 | 149 | 5 | 17.76 |
| MAP055 | 177 | 190 | 14 | 4.89 |
| MAP060 | 222 | 247 | 25 | 4.86 |
| MAP062 | 217 | 240 | 23 | 5 |
| MAP070 | 221 | 233 | 12 | 5.28 |
| | 284 | 298 | 14 | 5.02 |
| | 286 | 292 | 6 | 9.62 |
| MAP072 | 184 | 255 | 71 | 3.53 |
| MAP073 | 271 | 293 | 22 | 6.02 |
| MAP076 | 228 | 240 | 12 | 5.39 |
| MAP079 | 270 | 294 | 24 | 17.4 |
| MAP082 | 227 | 256 | 29 | 2.5 |
| MAP086 | 179 | 183 | 4 | 6.12 |
| | 215 | 234 | 19 | 2.85 |
| MAP089 | 275 | 334 | 59 | 9.61 |
| MAP090 | 180 | 186 | 6 | 9.91 |
| MAP091 | 222 | 284 | 62 | 2.05 |

El Cedro – Gold Porphyry

Large gold porphyry
system – barely touched

Soil sampling
recommenced – high
grade gold at surface



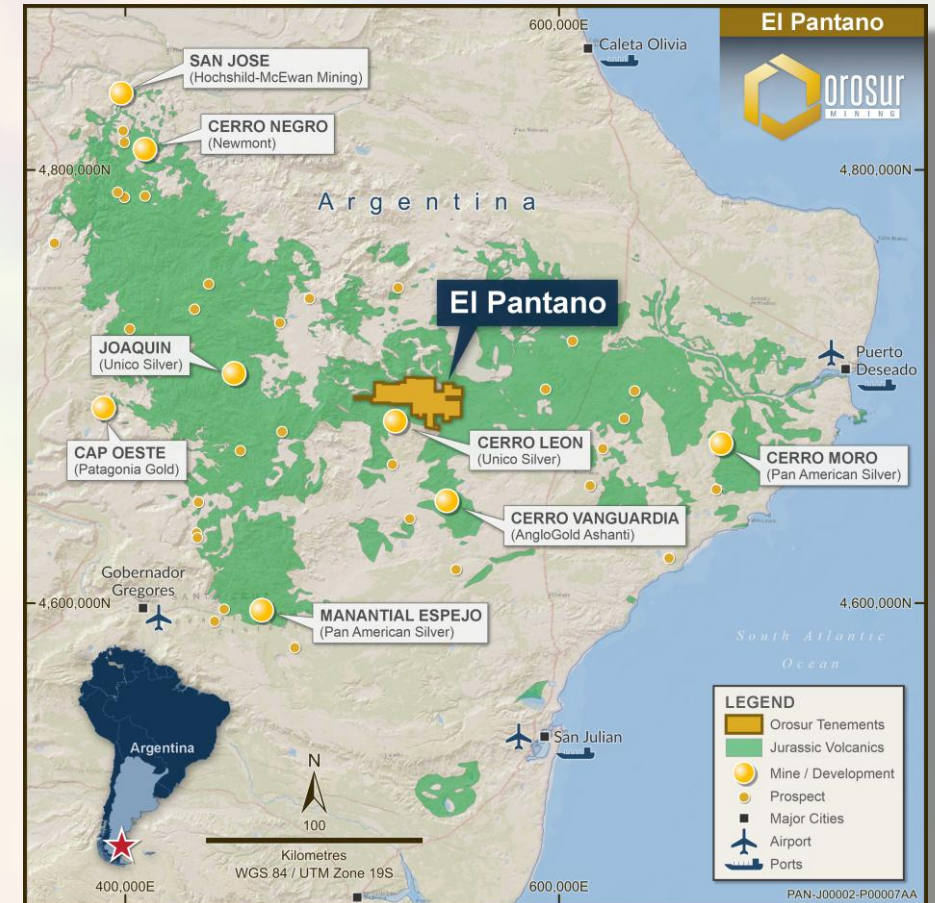
El Pantano - Argentina



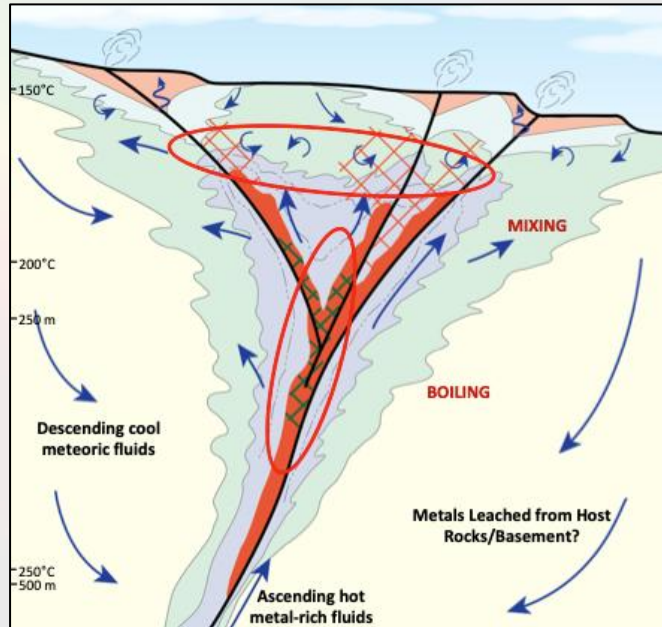
Large land holding – 550km² in Deseado Massif.



**Earned 51%,
JV pathway
to 100%**

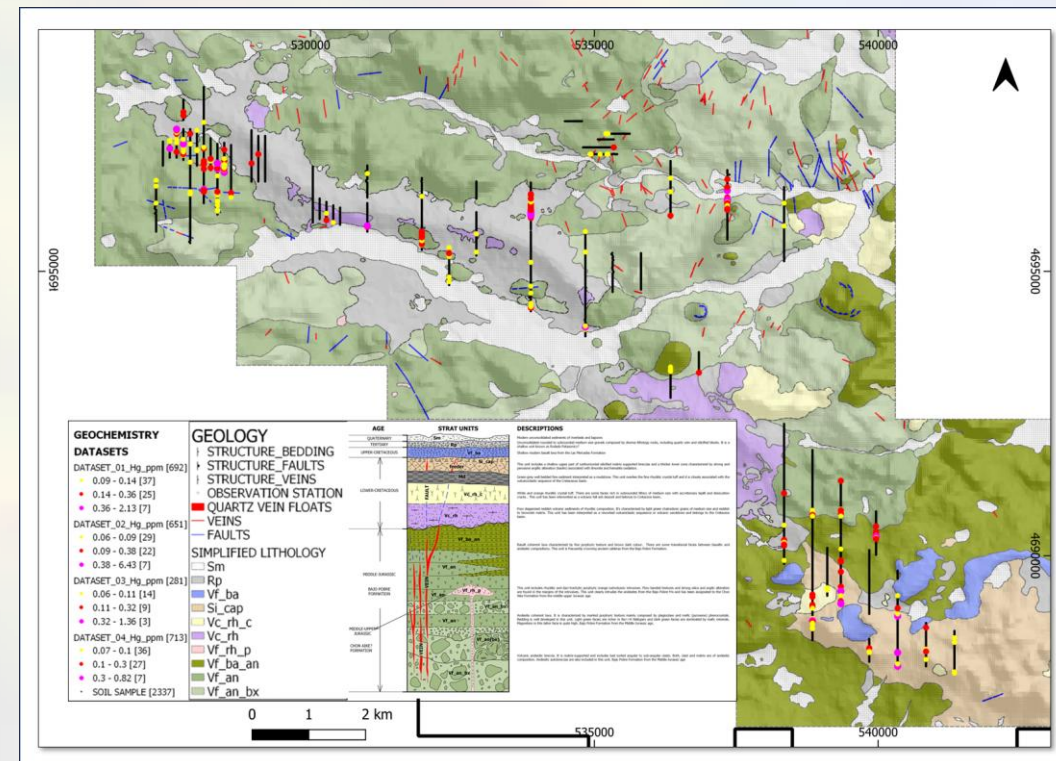


El Pantano – first drilling soon

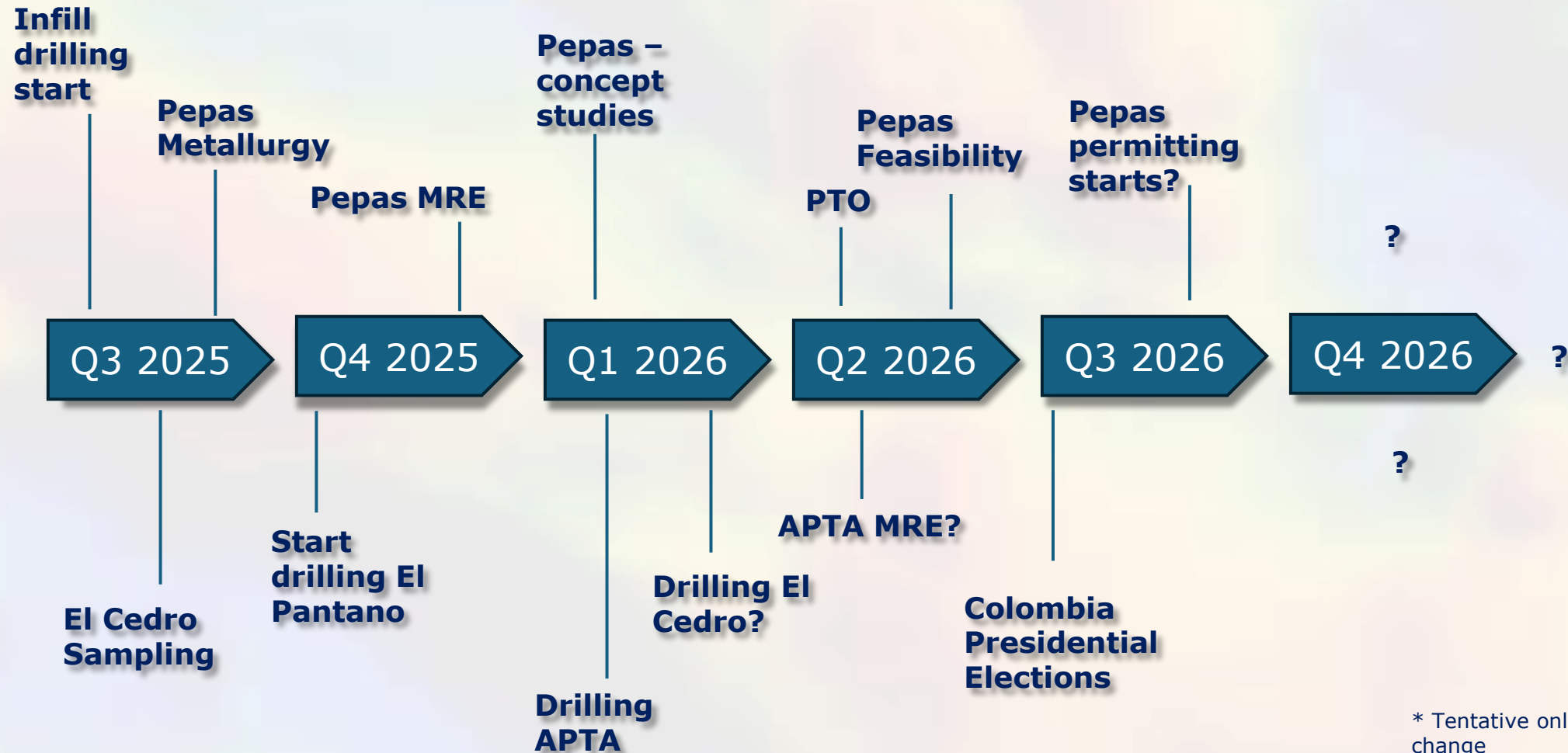


First drilling to understand vertical position

Rift related low-sulphidation model



Tentative Timeline*



Thank You



bgeorge@orosur.ca